

THE CORPORATION OF THE  
TOWNSHIP OF BONNECHERE VALLEY

BY-LAW 2008-12

A BY-LAW TO AMEND COMPREHENSIVE ZONING  
BY-LAW NUMBER 2006-28 OF THE TOWNSHIP OF BONNECHERE VALLEY.

PURSUANT TO SECTIONS 34 AND 39 OF THE PLANNING ACT, R.S.O. 1990, c.P. 13, THE CORPORATION OF THE TOWNSHIP OF BONNECHERE VALLEY HEREBY ENACTS AS FOLLOWS:

1. THAT Comprehensive Zoning By-Law Number 2006-28 is hereby amended as follows:
  - (a) By adding a new subsection immediately following Section 12.3 (d) as follows:

"12.3 (e) Limited Service Residential One – Exception Five (LSR1-E5)

Notwithstanding any other provisions of this By-law to the contrary, for the lands zoned Limited Service Residential One-Exception Five (LSR1-E5) and located within Part Lot 15, Concession 10 in the geographic Township of South Algona, in the Township of Bonnechere Valley, a limited service dwelling shall be permitted."
2. Schedule A-1 (South Algona) to Zoning By-law Number 2006-28 is amended by rezoning the lands located within Part of Lot 15, Concession 10, in the geographic Township of South Algona, from a "Limited Service Residential One (LSR1) Zone" to a "Limited Service Residential One – Exception Five (LSR1-E5) Zone" as shown on Schedule "A" attached hereto.
3. THAT save as aforesaid all other provisions of By-Law Number 2006-28 as amended shall be complied with.
4. THIS By-law shall come into force and take effect on the day of final passing thereof.

THIS BY-LAW GIVEN ITS FIRST AND SECOND READING THIS 13<sup>th</sup> DAY OF FEBRUARY 2008.

THIS BY-LAW GIVEN ITS THIRD TIME AND FINALLY PASSED THIS 13<sup>th</sup> DAY FEBRUARY 2008.

  
MAYOR

  
C.A.O.

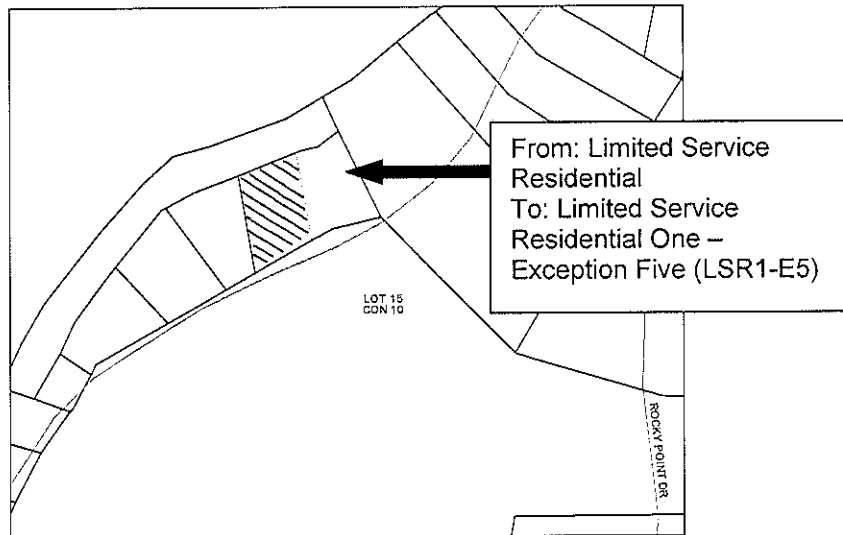
CORPORATE  
SEAL OF  
MUNICIPALITY

**KEY MAP**

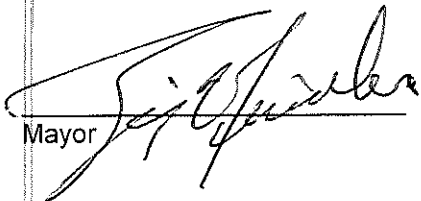
**Geographic Township of South Algona  
Now in the Township of Bonnechere Valley**

**THE CORPORATION OF THE TOWNSHIP OF BONNECHERE VALLEY**

**This is Schedule "A" to By-Law 2008-12  
Passed this 13th day of February, 2008**



Signature of Officers:

  
Mayor

  
C.A.O.

Area Affected by Amendment

