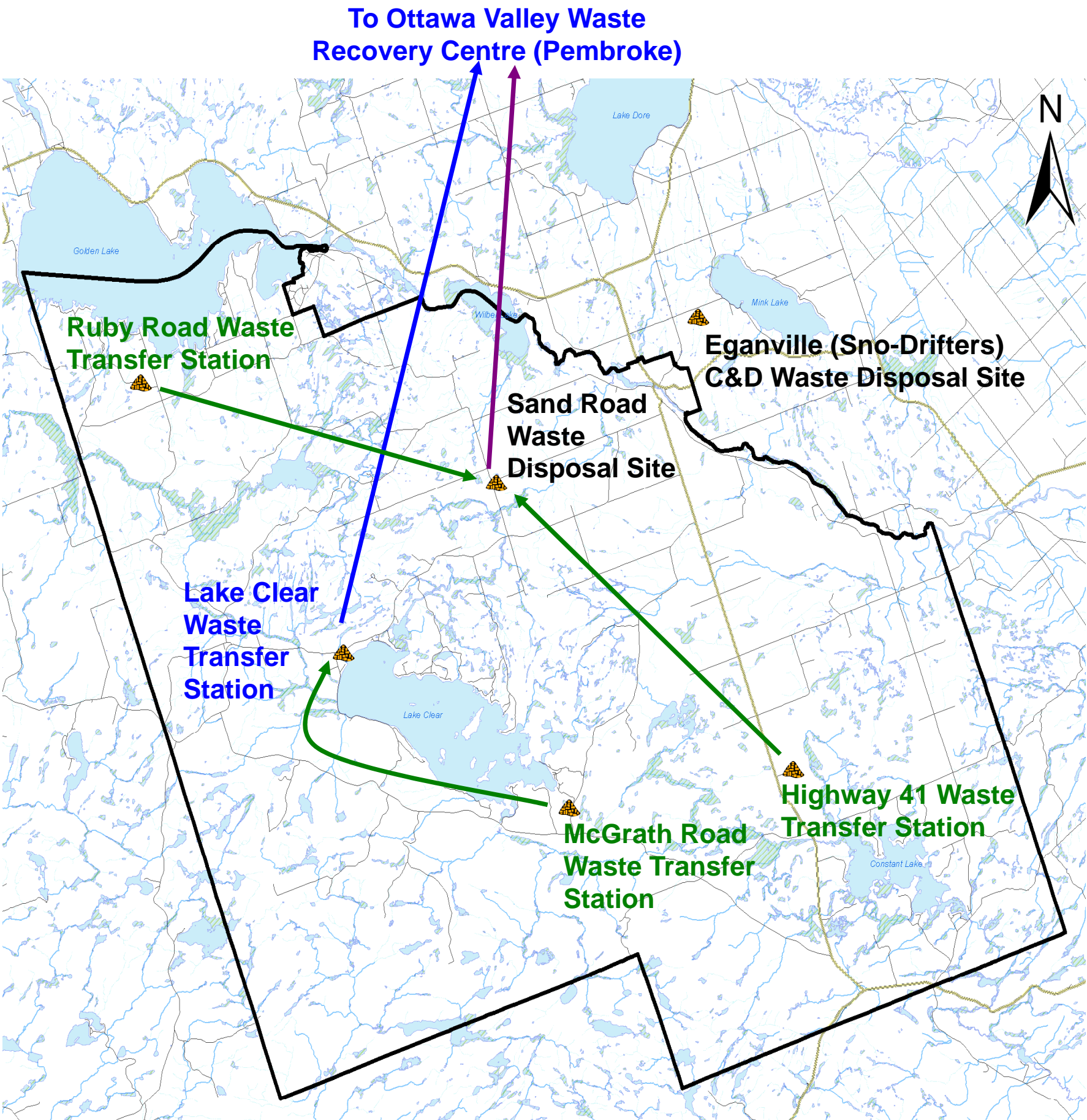


# The Current Flow of Waste



Map not drawn to scale

### LEGEND

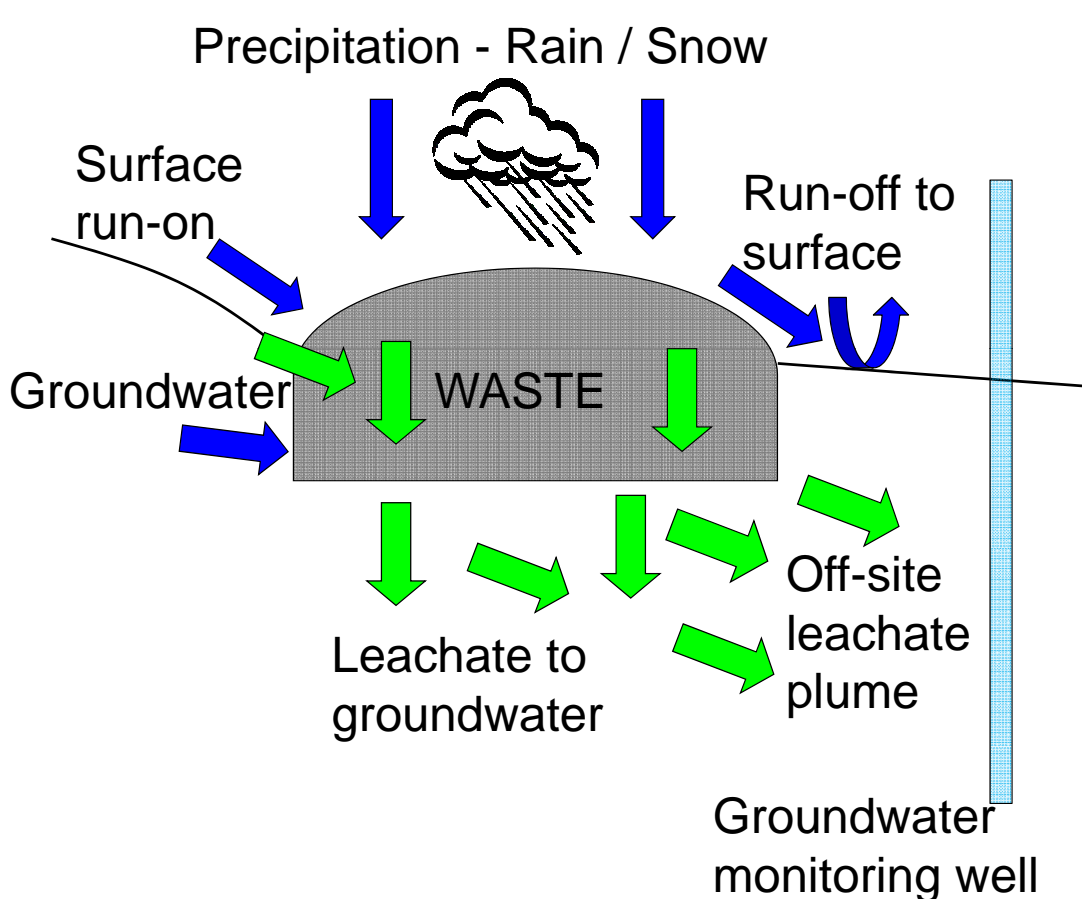
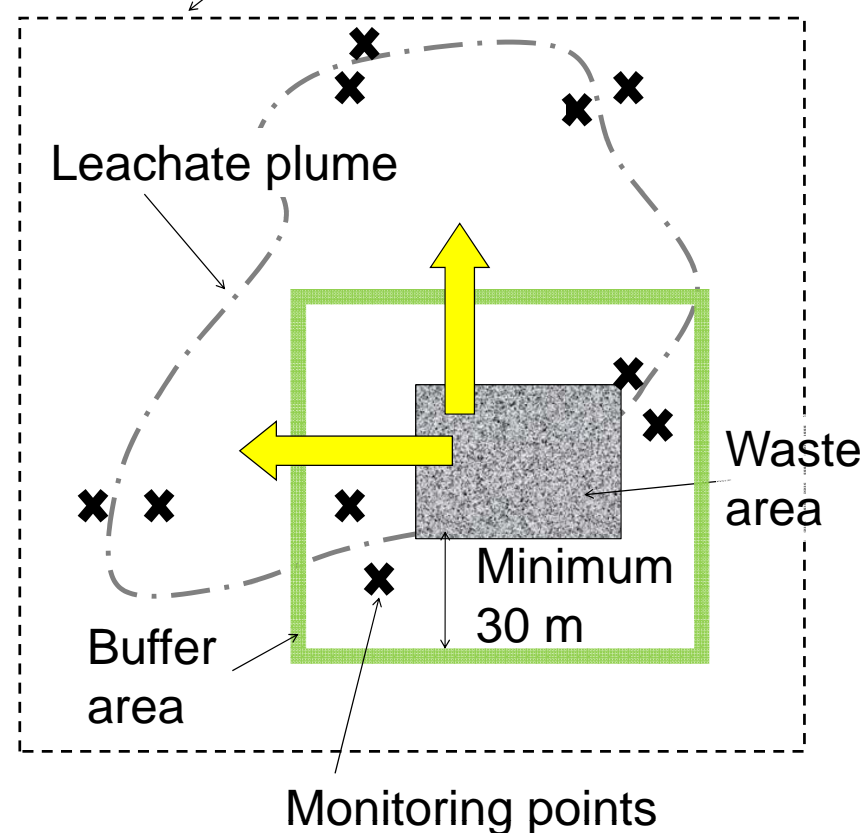
Waste and Recyclable Transfer	Waste and Recyclable Export	Recyclable Export



# Design Goals of Sanitary Landfill

- To serve the disposal needs of a specific community or region
- To protect the environment

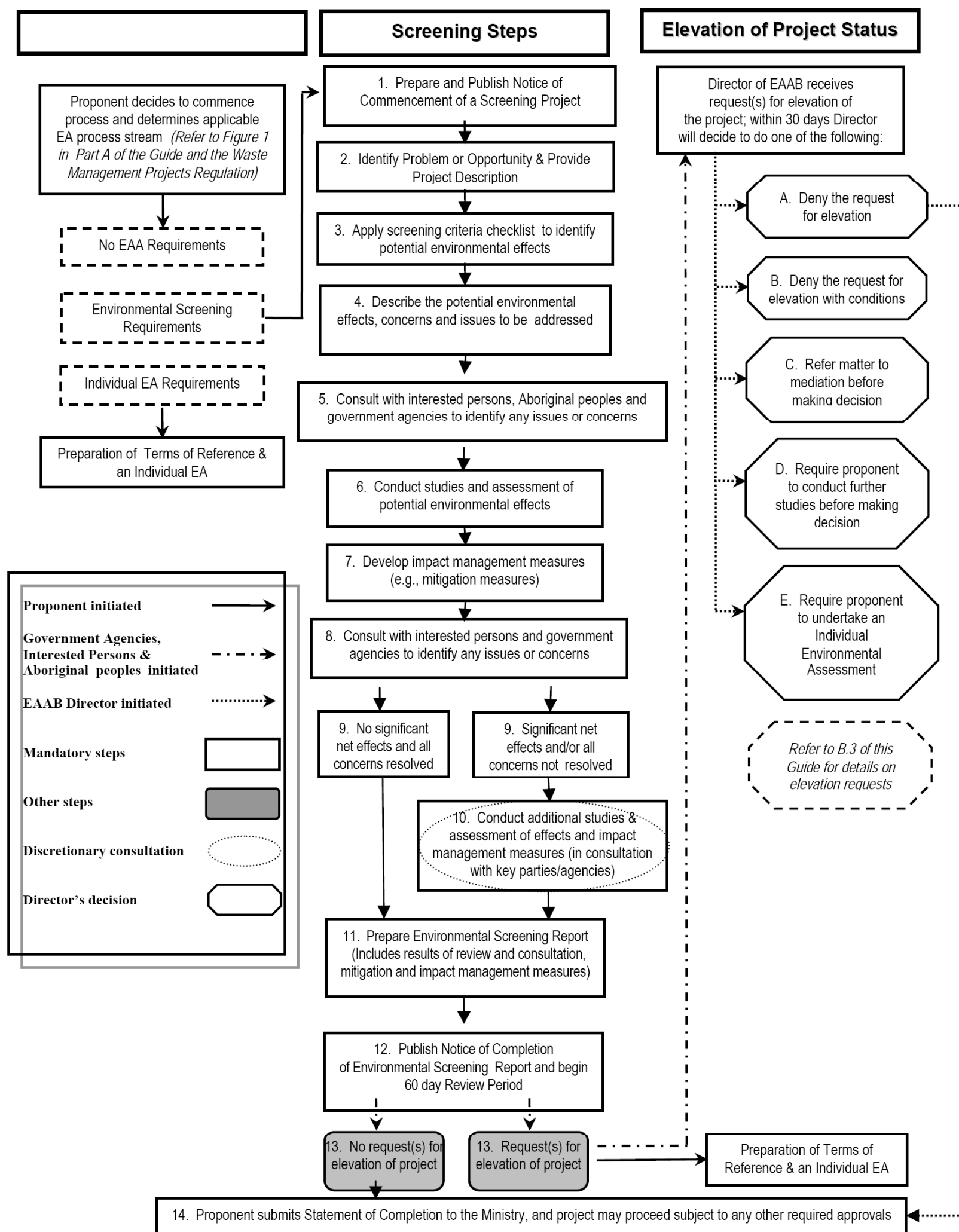
Property boundary and contaminant attenuation zone (CAZ)

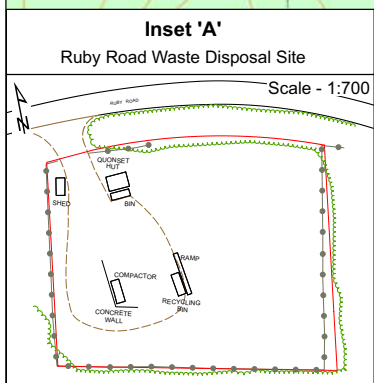
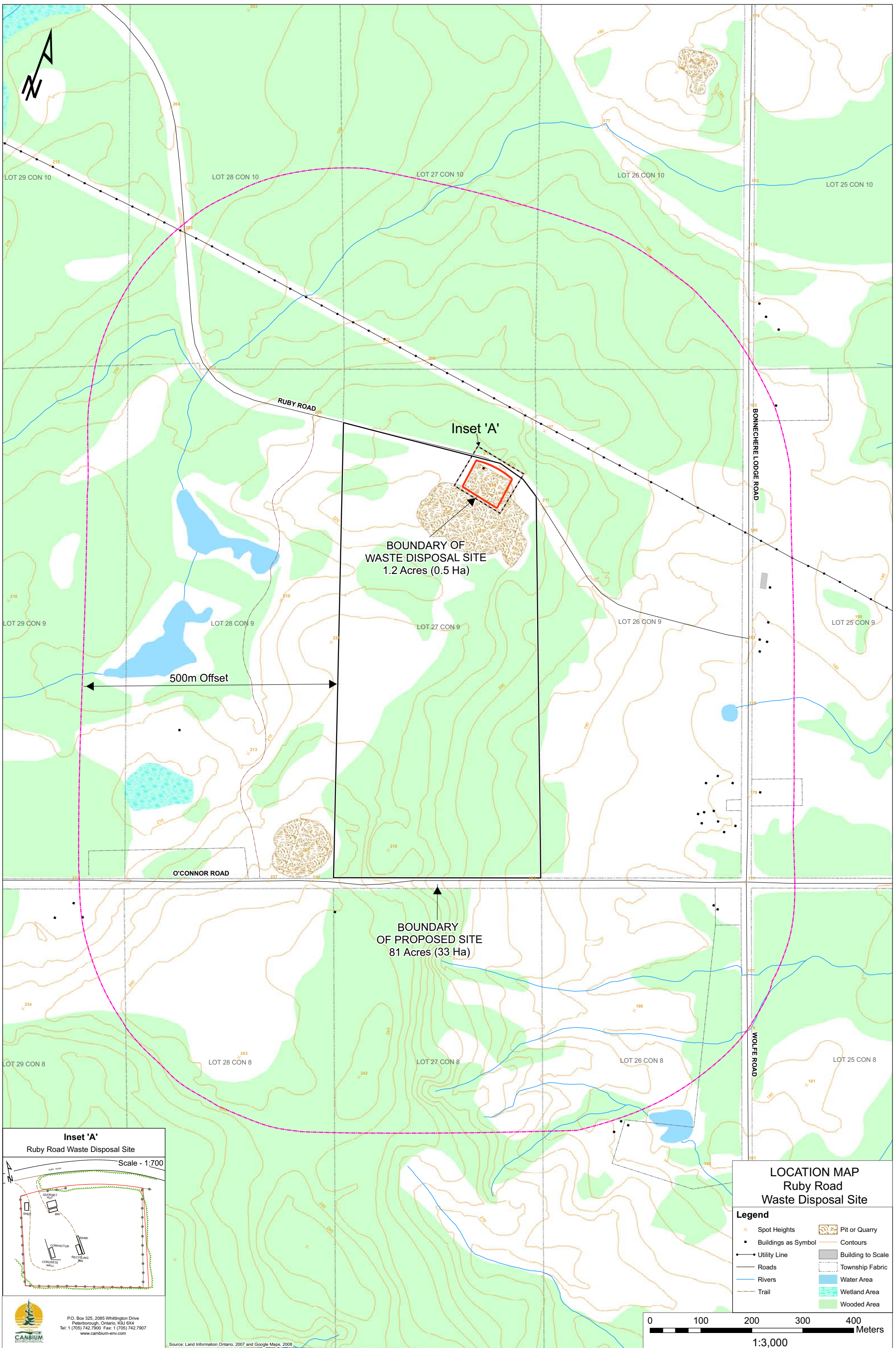


- To use landfill space efficiently and extend site life as much as is practical
- To minimize potential nuisance conditions



# Details of Environmental Screening Process



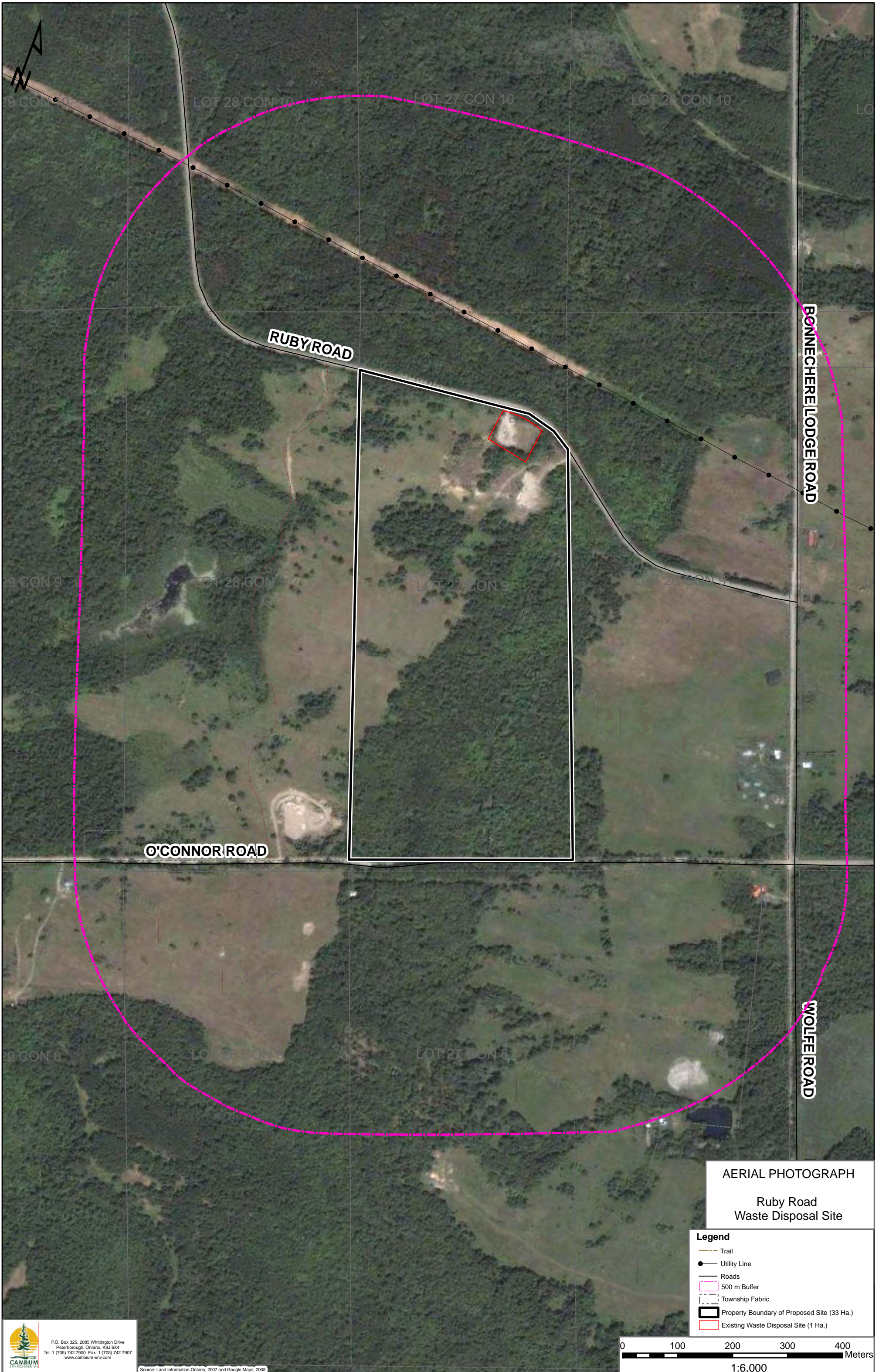


**LOCATION MAP**  
**Ruby Road**  
**Waste Disposal Site**

**Legend**

✕ Spot Heights	🏠 Pit or Quarry
■ Buildings as Symbol	— Contours
— Utility Line	▭ Building to Scale
— Roads	⬜ Township Fabric
— Rivers	💧 Water Area
— Trail	🌿 Wetland Area
	🌲 Wooded Area

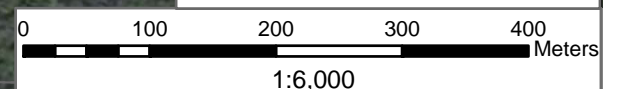
0 100 200 300 400  
 1:3,000  
 Meters



**AERIAL PHOTOGRAPH**

**Ruby Road  
Waste Disposal Site**

- Legend**
- Trail
  - Utility Line
  - Roads
  - 500 m Buffer
  - Township Fabric
  - Property Boundary of Proposed Site (33 Ha.)
  - Existing Waste Disposal Site (1 Ha.)



P.O. Box 325, 2085 Whittington Drive  
Peterborough, Ontario, K9J 6X4  
Tel: 1 (705) 742-7900 Fax: 1 (705) 742-7907  
www.cambium-env.com

Source: Land Information Ontario, 2007 and Google Maps, 2008

# Environmental Screening Checklist



***Might the project...***

Criterion	Potential Environmental Effect?	
	YES	NO
<b>1. Surface and Ground Water</b>		
1.1 cause negative effects on surface water quality, quantities or flow?	X	
1.2 cause negative effects on ground water quality, quantity or movement?	X	
1.3 cause significant sedimentation or soil erosion or shoreline or riverbank erosion on or off site?		X
1.4 cause negative effects on surface or ground water from accidental spills or releases (e.g. leachate) to the environment?	X	
<b>2. Land</b>		
<b>YES NO</b>		
2.1 cause negative effects on residential, commercial, institutional or other sensitive land uses within 500 metres from the site boundary?	X	
2.2 not be consistent with the Provincial Policy Statement, provincial land use or resource management plans?	X	
2.3 be inconsistent with municipal land use policies, plans and zoning bylaws (including municipal setbacks)?	X	
2.4 use lands not zoned as industrial, heavy industrial or waste disposal?	X	
2.5 use hazard lands or unstable lands subject to erosion?		X
2.6 cause negative effects related to the remediation of contaminated land?		X
<b>3. Air and Noise</b>		
<b>YES NO</b>		
3.1 cause negative effects on air quality due to emissions (for parameters such as temperature, thermal treatment exhaust flue gas volume, nitrogen dioxide, sulphur dioxide, residual oxygen, opacity, hydrogen chloride, suspended particulates, or other contaminants)?	X	
3.2 cause negative effects from the emission of greenhouse gases (e.g., carbon dioxide, carbon monoxide, methane)?	X	
3.3 cause negative effects from the emission of dust or odour?	X	
3.4 cause negative effects from the emission of noise?	X	
3.5 cause light pollution from trucks or other operational activities at the site?		X
<b>4. Natural Environment</b>		
<b>YES NO</b>		
4.1 cause negative effects on rare (vulnerable), threatened or endangered species of flora or fauna or their habitat?	X	
4.2 cause negative effects on protected natural areas such as, ANSIs, ESAs or other significant natural areas?	X	
4.3 cause negative effects on designated wetlands?	X	
4.4 cause negative effects on wildlife habitat, populations, corridors or movement?	X	
4.5 cause negative effects on fish or their habitat, spawning, movement or environmental condition (e.g., water temperature, turbidity, etc.)?	X	
4.6 cause negative effects on locally important or valued ecosystems or vegetation?	X	
4.7 increase bird hazards within the area that could impact surrounding land uses (e.g., airports)?		X

Criterion	Potential Environmental Effect?	
	YES	NO
<b>5. Resources</b>		
<b>YES NO</b>		
5.1 result in practices inconsistent with waste studies and/or waste diversion targets (e.g., result in final disposal of materials subject to diversion programs)?		X
5.2 result in generation of energy that cannot be captured and utilized?	X	
5.3 be located a distance from required infrastructure (such as availability to customers, markets and other factors)?		X
5.4 cause negative effects on the use of Canada Land Inventory Class 1-3, specialty crop or locally significant agricultural lands?		X
5.5 cause negative effects on existing agricultural production?	X	
<b>6. Socio-economic</b>		
<b>YES NO</b>		
6.1 cause negative effects on neighborhood or community character?	X	
6.2 result in aesthetics impacts (e.g., visual and litter impacts)?	X	
6.3 cause negative effects on local businesses, institutions or public facilities?		X
6.4 cause negative effects on recreation, cottaging or tourism?	X	
6.5 cause negative effects related to increases in demands on community services and infrastructure?	X	
6.6 cause negative effects on the economic base of a municipality or community?		X
6.7 cause negative effects on local employment and labour supply?		X
6.8 cause negative effects related to traffic?	X	
6.9 be located within 8 km of an aerodrome/airport reference point?		X
6.10 interfere with flight paths due to the construction of facilities with height (i.e., stacks)?		X
6.11 cause negative effects on public health and safety?		
<b>7. Heritage and Culture</b>		
<b>YES NO</b>		
7.1 cause negative effects on heritage buildings, structures or sites, archaeological sites or areas of archaeological importance, or cultural heritage landscapes?	X	
7.2 cause negative effects on scenic or aesthetically pleasing landscapes or views?	X	
<b>8. Aboriginal</b>		
<b>YES NO</b>		
8.1 cause negative effects on land, resources, traditional activities or other interests of Aboriginal communities?	X	
<b>9. Other</b>		
<b>YES No</b>		
9.1 result in the creation of non-hazardous waste materials requiring disposal?		X
9.2 result in the creation of hazardous waste materials requiring disposal?		X
9.3 cause any other negative environmental effects not covered by the criteria outlined above?		X

---

# Solid Waste Management Strategies



- Reduce the amount of packaging you buy, reuse what you can, and recycle the rest.
- Compost food and yard waste
  - Use a mulching lawnmower to reduce the size of the clippings to spread back onto grass to decompose back into soil
- Buy durable products and maintain/repair them for longer life
- Borrow or rent items rarely used
- Sell or donate products you no longer use
- Avoid excess packaging
  - Look for products without packaging
  - Avoid individually wrapped portions (cheese slices, juice, etc.)
- Favour products with a high recycled content
- Choose concentrated products in reusable containers, and largest size containers
- Buy in bulk
  - Take your own glass or other containers to the store to be filled directly with bulk goods.
- Buy foods in plastic bags rather than boxes
- Choose rechargeable batteries and long-life bulbs
- Avoid disposable napkins, paper plates, razors, pens, pencils, lighters, etc.
- Buy recycled paper bathroom tissue, napkins and kitchen towels.
- Take your own mug or thermos to the coffee shop
- Use your own reusable canvas or string bags when shopping
  - If you do opt for paper or plastic grocery bags, take them back to the store to be recycled

